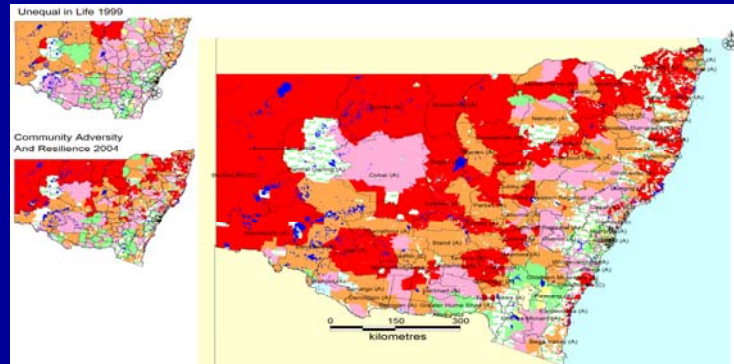


THE REALITY OF LOCATIONAL SOCIAL DISADVANTAGE

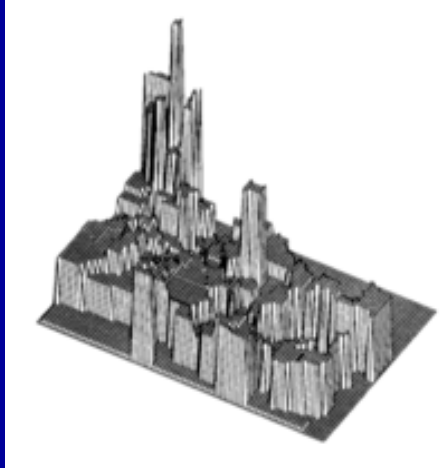


WHAT COULD HELP TO REDUCE ITS ILL-EFFECTS?

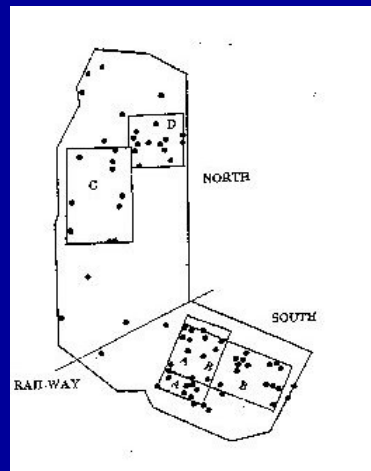
EARLY STUDIES – MAYHEW (1861)



EARLY STUDIES – NEWCASTLE, NSW (1972)



SPATIAL CLUSTERING CONFIRMED CHILD MALTREATMENT



THE INDICATORS

- (1) **SOCIAL DISTRESS:** low family income, rental stress, home purchase stress, lone person households.
- (2) **HEALTH:** low birth-weight, childhood injuries, immunisation, disability / sickness support, life expectancy, psychiatric patients: hospital / community, suicide.
- (3) **COMMUNITY SAFETY:** child maltreatment, criminal convictions, imprisonment, domestic violence.
- (4) **ECONOMIC:** unskilled workers, unemployment, long-term unemployment, dependency ratio (employed: unemployed), low mean taxable income, limited computer use / internet access.
- (5) **EDUCATION:** non-attendance at preschool, incomplete education, early school leaving, post-schooling qualifications.

GENERAL PERSPECTIVE

Where an accumulation of problems makes a serious impact upon the wellbeing of residents of a disadvantaged area, locality-specific measures may be needed to supplement general social policy.

The influence of structural macroeconomic factors in creating concentrations of poverty acknowledged.

UNITS OF STUDY

As small as available data permits.

- **Postcodes:** Victoria (726), NSW (647), ACT (24)
- **Statistical Local Areas (SLAs):**
Queensland (459), South Australia (114)
- **Local Government Areas (LGAs):**
Tasmania (29), Western Australia (142)
- **Standard Reporting Regions:**
Northern Territory (6)

IDENTIFYING DISADVANTAGED AREAS

SIMPLE METHOD:

- Number of times localities in the top bracket on indicators
- Profiles of top ranking areas

STATISTICAL METHOD:

- Position on all of the indicators, weighted for contribution of each indicator to disadvantage

SIMPLE APPROACH

Identifying areas of marked disadvantage – (simple method – number of times in top 5%).

Spatial concentration of disadvantage – general position: 1.5% of localities account for six to seven times their share of top ranking positions.

FIRST PROFILE OF DISADVANTAGE

Recurring features of areas prominent on some of the indicators:

- **Limited general education; Year 12 incomplete; limited computer use / internet access; lack post-school qualifications**
- **Criminal convictions / imprisonment**
- **Low family income**
- **Unemployment / long-term unemployment**
- **Disability / sickness support**
- **Child maltreatment.**

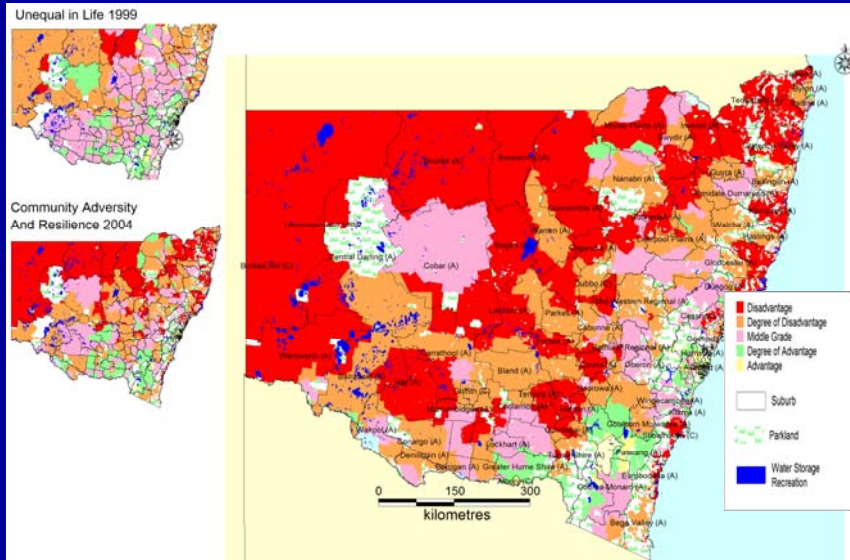
STATISTICAL METHOD

- PRINCIPAL COMPONENTS ANALYSIS:
- ASSESSING LOCALITIES' SUSCEPTIBILITY TO DISADVANTAGE BY SCORES ALONG A SINGLE DIMENSION

NSW disadvantage factor – highest correlating indicators

Computer use/internet
Early school leaving; Year 12 incomplete;
post-school qualifications
Low family income/taxable income
Low work skills
Long-term unemployed; unemployed
Criminal convictions; admissions to prison
Disability/sickness support
Dependency ratio (employed: unemployed)

NSW



Highest Ranking Postcodes

- **BAND 1:** Bonalbo (2469), Brewarrina (2839), Kempsey (2440), Lightning Ridge (2834), Tingha (2369), Windale (2306)
- **BAND 2:** Bowraville (2449), Casino (2470), Deepwater (2371), Menindee (2879), Urunga (2455), Wellington (2820)
- **BAND 3:** Armatree (2831), Coraki (2471), Harrington (2427), Nambucca Heads (2448), Tweed Heads (2485), Walgett (2832)
- **BAND 4:** Forster (2428), Kurri Kurri (2327), Toukley (2263), Weston (2326), Woodenbong (2476), Wilcannia (2836)
- **BAND 5:** Boggabilla (2409), Claymore (2559), Koorawatha (2807), Lake Cargelligo (2672), South West Rocks (2431), Tenterfield (2372)
- **BAND 6:** Ashford (2361), Bourke (2840), Broken Hill (2880), Diamond Head (2443), Iluka (2466), Inverell (2360), Mt. Druitt (2770), Sawtell (2452), Taree (2430), Warrawong (2502)

CONSISTENCY OF RATINGS

- **THREE MAJOR PIECES OF EVIDENCE:**
- 1) TOP 40 RANKINGS IN 2006 AND COMPARABLE LISTS IN 2004 AND 1999 VERY SIMILAR FOR NSW AND VICTORIA.
- 2) CORRELATIONS OF VICTORIAN AND NSW DISADVANTAGE FACTOR RANKINGS 2004 AND 2006 APPROXIMATELY +0.90.
- 3) CORRELATIONS OF FACTOR SCORES IN 1999 AND 2006 ALSO HIGH (+0.75 FOR VICTORIA AND +0.80 FOR NSW).

NATIONAL PICTURE

Dominant features of localities with high overall disadvantage scores	Characteristics of places with high ranked positions on some indicators
Low income families	✓
Limited computer use	✓
Early school leaving	✓
Year 12 incomplete	✓
No internet access	✓
Disability / sickness support	✓
Long-term unemployment	✓
Criminal convictions	✓
Low work skills	--
Average mean taxable income	--
Dependency ratio	--
<i>Attributes identified by other analyses</i>	
Lack of post school qualifications	✓
Unemployment	✓
Prison admissions	✓
Confirmed child maltreatment	✓

CONVERGING EVIDENCE ACROSS NATION:

**DISADVANTAGING CONSEQUENCES OVER
30 YEARS OF -**

- **LIMITED EDUCATION GENERALLY AND
LACK OF ED/TRAINING IN YOUNG ADULTS**
- **LIMITED COMPUTING SKILLS**
- **DEFICIENT LABOUR MARKET
CREDENTIALS**

CONVERGING EVIDENCE ACROSS NATION:

DISADVANTAGING CONSEQUENCES OVER 30 YEARS OF -

- **INDIFFERENT HEALTH AND DISABILITIES**
- **LOW INDIVIDUAL AND FAMILY INCOME**
- **ENGAGEMENT IN CRIME**
- **WHERE CONCENTRATION OF HIGH
RANKINGS, CONFIRMED CHILD
MALTREATMENT**

3% COMPARED WITH REST

WA:	IMPRISONMENT X	15.0
	LONG-TERM UNEMP.X	5.5
	DISABILITY/SICKNESS X	5.0
	ED/TRAIN INCOMPL. X	2.5
NSW:	CHILD MALTREAT X	4.5
	IMPRISONMENT X	3.5
SA:	CHILD MALTREAT X	4.0
	LONG-TERM UNEMP. X	3.0
QLD:	CHILD MALTREAT X	3.0
	IMPRISONMENT X	3.0

MILDURA FORUM



RESOURCING DISADVANTAGED COMMUNITIES

- **Creation of tangible opportunities in areas such as:**
 - **Education and training/re-training**
 - **Work and income generation**
 - **Health promotion and treatment**
 - **Parenting skills**
 - **'Problem solving' law enforcement**
 - **Developing local leadership capacities**
 - **Other specific needs of an area (indicators or identified by residents)**

IMPACT OF SOCIAL COHESION

- **DOES LOCAL SOCIAL CLIMATE AFFECT COMMUNITY RESILIENCE?**
- **CAN THE STRENGTH OF LOCAL SOCIAL BONDS LESSEN THE IMPACT OF DAMAGING SOCIAL, HEALTH AND ECONOMIC CONDITIONS ON COMMUNITY WELLBEING?**
- **KEY CONCEPT: SOCIAL COHESION (CONNECTIONS BETWEEN PEOPLE AND BETWEEN THEM AND THEIR COMMUNITY)**

SOCIAL COHESION

DEFINING CHARACTERISTICS:

- VOLUNTEERISM
- MEMBERSHIP OF LOCAL GROUPS
- GROUP ACTION TO IMPROVE COMMUNITY
- NEIGHBOURS HELP IN DIFFICULT TIMES
- FEEL SAFE WALKING IN NEIGHBOURHOOD
- AGREE PEOPLE CAN BE TRUSTED
- ATTENDANCE AT LOCAL COMMUNITY EVENT
- FEEL VALUED BY SOCIETY

SOCIAL COHESION

SCORES FOR 495 VICTORIAN POSTCODES:

- **155** SHOWED **HIGH** SOCIAL COHESION
- **176** SHOWED **MEDIUM** SOCIAL COHESION
- **164** SHOWED **LOW** SOCIAL COHESION

24 four pairs of harmful communal conditions and associated unwanted outcomes were studied across the 495 postcodes with social cohesion scores.

In every instance the degree of association (correlation) between the adverse conditions and unwanted outcomes was lower in the high cohesion localities than in the low cohesion ones.

In 19/24 instances the size of r in the middle category was between that of the low and high cohesion groups.

EXAMPLES OF IMPACT OF SOCIAL COHESION

	495 postcode areas	LOW social cohesion N=164	HIGH social cohesion N=155
CRIME			
Unemployment/imprisonment	.44	.67	.17
CHILD MALTREATMENT			
Low family income/child mistreatment	.36	.59	.27
NON-ATTENDANCE AT PRESCHOOL			
Low family income/no preschool	.39	.56	.17
UNEMPLOYMENT			
Early school leaving/unemployment	.42	.67	.14
PSYCHIATRIC HOSPITAL ADMISSIONS			
Unemployment/psych. hosp. admissions	.30	.50	.12
DOMESTIC VIOLENCE			
Unemployment/domestic violence	.41	.44	.30
LOW BIRTH-WEIGHT			
Early school leaving/low birth-weight	.19	.46	.11